

Extrusions & Rolled Sections

MRO Material Support

AND extrusions are based on Army and Navy Drawings, and their references relate to extruded products and profiles which find use in many aircraft types.

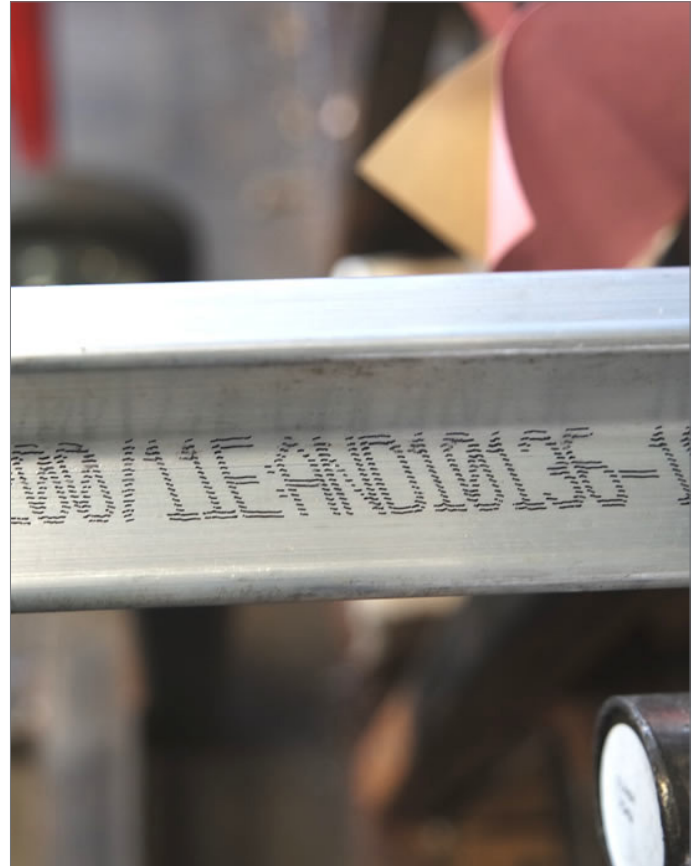
As with all aluminium extrusion profiles, these parts are available in 2024, 6061, 7050, 7075 and 7178 aluminium alloys and various tempers.

Shape Varieties

AND Extrusions come in various shapes, including:

- AND10133 (Angle with equal legs)
- AND10134 (Angle with un-equal legs)
- AND10135 (Bulbed Angle)
- AND10136 (T Section)
- AND10137 (Channels)
- AND10138 (Z sections)
- AND10139(Z sections)
- AND10140 & AND10141 (Bulbed T section)

Smiths MRO offers a vast range of aluminium extrusion profiles according to internationally recognised part numbers in various shapes and sizes. Our range includes AND, ASNA, BAC, LN and other less-known part numbers.

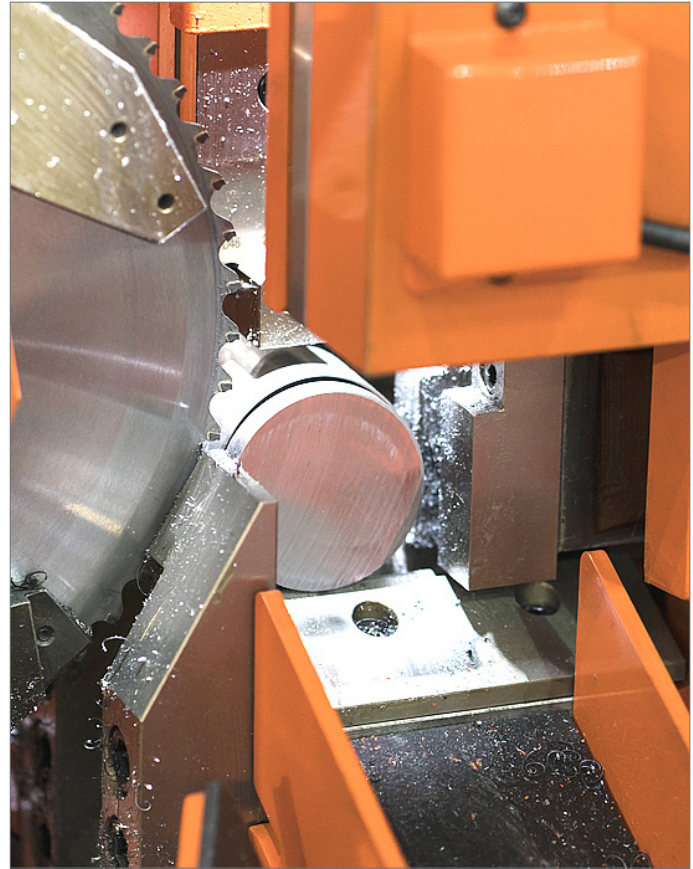


AND Extrusions

AND10133-0401	AND10133-1602	AND10134-1401	AND10134-2407	AND10136-1603
AND10133-0501	AND10133-2001	AND10134-1402	AND10134-2410	AND10136-1604
AND10133-0601	AND10133-2002	AND10134-1403	AND10134-3001	AND10136-1605
AND10133-0602	AND10133-2003	AND10134-1404	AND10134-3004	AND10136-1704
AND10133-0603	AND10133-2401	AND10134-1406	AND10134-3005	AND10136-2001
AND10133-0701	AND10133-2402	AND10134-1407	AND10134-3006	AND10136-2004
AND10133-0702	AND10134-0501	AND10134-1408	AND10135-1001	AND10136-2005
AND10133-0703	AND10134-0601	AND10134-1601	AND10135-1002	AND10136-2006
AND10133-1001	AND10134-0602	AND10134-1602	AND10135-1004	AND10136-2007
AND10133-1002	AND10134-0701	AND10134-1604	AND10135-1005	AND10136-2008
AND10133-1003	AND10134-0702	AND10134-2001	AND10135-1201	AND10136-2401
AND10133-1201	AND10134-1002	AND10134-2003	AND10135-1501	AND10136-2403
AND10133-1202	AND10134-1003	AND10134-2004	AND10136-1201	AND10136-2405
AND10133-1203	AND10134-1005	AND10134-2006	AND10136-1301	AND10136-2407
AND10133-1204	AND10134-1006	AND10134-2007	AND10136-1302	AND10136-2408
AND10133-1401	AND10134-1201	AND10134-2008	AND10136-1401	AND10136-2409
AND10133-1402	AND10134-1202	AND10134-2009	AND10136-1404	AND10136-3001
AND10133-1403	AND10134-1204	AND10134-2010	AND10136-1405	AND10136-3003
AND10133-1404	AND10134-1205	AND10134-2401	AND10136-1505	AND10136-3005
AND10133-1601	AND10134-1206	AND10134-2405	AND10136-1506	AND10136-3006

AND Extrusions (continued)

AND10137-0601	AND10138-0404
AND10137-0605	AND10138-0504
AND10137-0606	AND10138-0505
AND10137-0701	AND10138-0603
AND10137-0706	AND10138-0604
AND10137-1007	AND10138-0605
AND10137-1010	AND10138-0704
AND10137-1011	AND10138-0707
AND10137-1109	AND10138-1002
AND10137-1110	AND10138-1003
AND10137-1112	AND10138-1004
AND10137-1114	AND10138-1009
AND10137-1201	AND10138-1010
AND10137-1202	AND10138-1106
AND10137-1206	AND10138-1203
AND10137-1207	AND10138-1301
AND10137-1306	AND10138-1305
AND10137-1308	AND10138-1306
AND10137-1401	AND10138-1404
AND10137-1405	AND10138-1602
AND10137-1601	AND10138-1603
AND10137-1602	AND10138-2008
AND10137-1604	AND10138-2401
AND10137-1609	AND10138-2402
AND10137-1610	AND10139-0505
AND10137-2002	AND10139-0604
AND10137-2004	AND10139-2003
AND10137-2007	AND10139-2202
AND10137-2012	AND10140-1204
AND10137-2404	AND10140-1404
AND10137-2601	AND10140-2002
AND10137-3002	AND10140-2401
AND10137-3003	AND10140-3002
AND10137-3004	AND10140-4005
AND10138-0403	AND10141-2001



Cut to size service

Thanks to our dedicated processing operations, we cut your extrusion and profile products to exact lengths in-house. There are no minimum order quantities, and we also cut products to shorter and specific lengths for ease of shipping.

We offer an unrivalled raw material supply proposition for the aerospace MRO market sector by combining our stock range and processing ops with rapid response times. We provide a quick, efficient service where often, your products are shipped within hours and on a global basis.



Stratton Business Park
London Road, Biggleswade
Bedfordshire, United Kingdom
SG18 8QB

Main Office: +44 (0)1767 604 555
24/7 Support: +44 (0)7710 107 987

Email: aog@smithsmro.com
Website: www.smithsmro.com

